

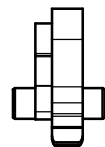
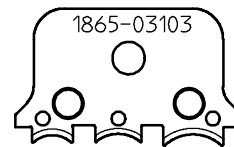
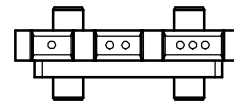
Type: CS30-Crimpeinsatz-Set 111...113
CS30- Die Set 111...113

Code-No: 1865-03103

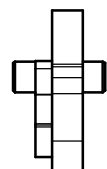
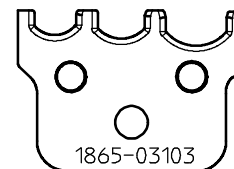
Ausführung:
Workmanship:

- Leichte Handhabung
Easy handling
- Einfache Kontaktpositionierung
Easy contact positioning
- Präzise geschliffene Profile
Precisely ground profiles
- Oberfläche brüniert
Burnished surface
- Voll recyclefähig;
RoHS(Richtlinie.2002/95/EG) konform
Fully recyclable;
RoHS(Directive.2002/95/EG) compliant

Crimpamboß, komplett
crimp anvil, complete
1865-03002



Crimpstempel, komplett
crimp punch, complete
1865-03001



Patent Crimpeinsatz
Patent Die Set
DE 198 02 287
US 6,053,025

Anwendungsbereich:
Application range:

Leiterquerschnitt Cross section range mm ²	Leiterquerschnitt Cross section range AWG	Crimphöhe Leiter Crimp height w ire	Crimpbreite Leiter Crimp width w ire	Kontakt-Typ: Kontakt-Type:
rot 0,5-1,0	red 20-16			Isolierte Verbinder rot/blau/gelb ohne Isolationscrimp Insulated connectors red/blue/yellow w ithout insulation crimp
blau 1,5-2,5	blue 16-14			
gelb 4,0-6,0	yellow 12-10			