

Type: CS30-Crimpeinsatz-Set Set 440
CS30-Die Set Set 440

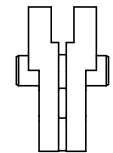
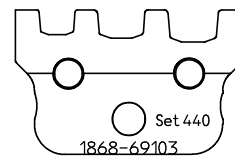
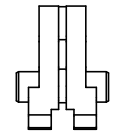
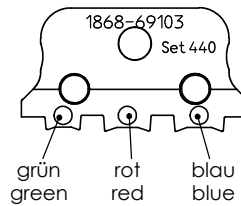
Code-No: 1868-69103

WDT-Type: I2525

**Ausführung:
Workmanship:**

- Leichte Handhabung
Easy handling
- Einfache Kontaktpositionierung
Easy contact positioning
- Präzise geschliffene Profile
Precisely ground profiles
- Oberfläche brüniert
Burnished surface
- Voll recylefähig:
RoHS (Richtlinie.2002/95/EG) konform
Fully recyclable:
RoHS (Directive.2002/95/EG) complaint

Crimpamboß, komplett
crimp anvil, complete
1868-69002



Crimpstempel, komplett
crimp punch, complete
1868-69001

Patent Crimpeinsatz
Patent Die Set
DE 198 02 287
US 6,053,025

**Anwendungsbereich:
Application range:**

	Leiterquerschnitt Cross section range mm ²	Leiterquerschnitt Cross section range AWG	Kontakt-Typ: Contact-Type:
grün green	0,25 - 0,75	24 - 20	DIN Kabelschuhe, Stiftkabelschuhe, Flachsteckhülsen, Rundstecker, Rundsteckhülsen DIN cable kugs, pin cable lugs, blade terminals and receptables, circular plugs and receptables, butt connectors, parallel connectors
rot red	0,5 - 1,5	22 - 18	
blau blue	1,5 - 2,5	16 - 14	