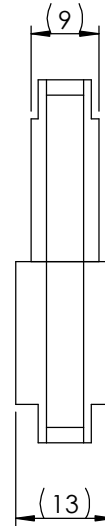
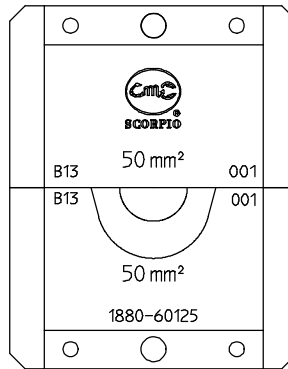
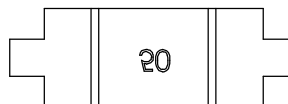


Type: EHC 10-Eins. KS 50 mm²

Code-No: 1880-60125



Crimpstempel 2480-60183
crimp punch 2480-60183



Ausführung:
Workmanship:

- Präzise gefertigtes Profile
Precisely produced profile
- Aus hochfestem Spezialstahl
High tempered steel
- Oberfläche brüniert
Burnished surface
- Voll recyclefähig;
RoHS(Richtlinie.2002/95/EG) konform
Fully recyclable;
RoHS(Directive.2002/95/EG) compliant

Abmessungen:
Dimensions:

- Länge: ca. 48 mm
Length: approx. 48 mm
- Breite: ca. 38 mm
Width: approx. 38 mm
- Gewicht: ca. 115 g
Weight: approx. 115 g

Anwendungsbereich:
Application range:

Leiterquerschnitt Cross section range mm ²	Kontakt-Typ: Contact-type:
50	Quetschkabelschuhe DIN 46234 - 50 mm ² Cable lugs DIN 46234 - 50 mm ²