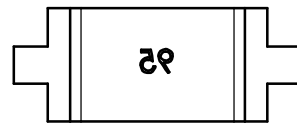
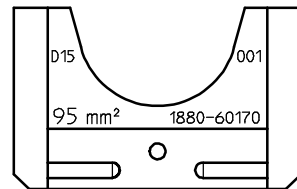
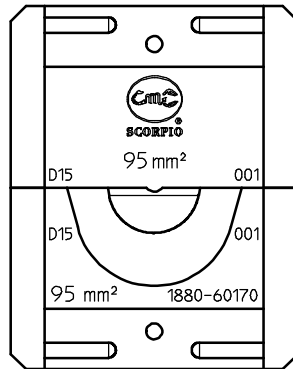
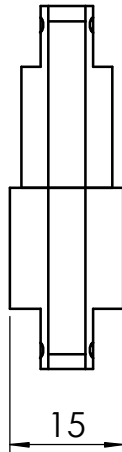


Type: EHC 10-Crimpeinsatz-Set KS 95 mm²
EHC 10-Crimp Die Set KS 95 mm²

Code-No: 1880-60170



**Ausführung:
Workmanship:**

- Präzise geschliffene Profile
Precisely ground profiles
- Aus hochfestem Spezialstahl
High tempered steel
- Oberfläche brüniert
Burnished surface
- Voll recyclefähig;
RoHS2(Richtlinie.2011/65/EU) konform
Fully recyclable;
RoHS2(Directive.2011/65/EU) compliant

**Abmessungen:
Dimensions:**

- Länge: ca. 48 mm
Length: approx. 48 mm
- Breite: ca. 38 mm
Width: approx. 38 mm
- Gewicht: ca. 116 g
Weight: approx. 116 g

**Anwendungsbereich:
Application range:**

Leiterquerschnitt Cross section range mm ²	Kontakt-Typ: Contact Type:
95	Quetschkabelschuh DIN 46234 - 95 mm ² Ring tongue terminal DIN 46234 - 95mm ²

Alle Rechte an diesem Dokument liegen bei WEZAG GmbH, WERKZEUGFABRIK 35260 Stadtallendorf

1880M60170
10.04.15 Dörr