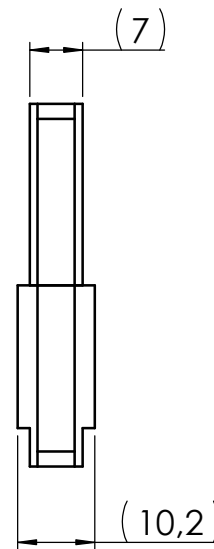
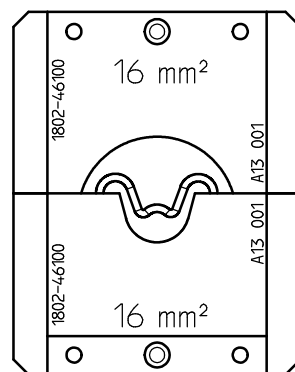


Type: Crimpeinsatz-Set CS 40/EHC - QKS 16mm<sup>2</sup>  
Crimp Die Set CS 40/EHC - sheet terminals 16mm<sup>2</sup>

Code-No: 1802-46100



**Ausführung:  
Workmanship:**

- Präzise geschliffenes Profil  
Precisely ground profile
- Aus hochfestem Spezialstahl  
High tempered steel
- Oberfläche brüniert  
Burnished surface
- Voll recyclefähig  
RoHS-Richtlinie 2011/65/EU konform  
Fully recyclable  
RoHS-Directive 2011/65/EU compliant

**Abmessungen:  
Dimensions:**

- Länge: 48mm  
Length: 48mm
- Breite: ca. 38mm  
Width: approx. 38mm
- Gewicht: ca. 85g  
Weight: approx. 85g

**Anwendungsbereich:  
Application range:**

Leiterquerschnitt Cross section range mm <sup>2</sup>	Kontakt-Typ: Contact-type:	Kontakt-Nr. Contact No.
16	Quetschkabelschuh sheet terminals	