

WEZAG®

Auswechselbare Crimpeinsätze Interchangeable crimp dies

Verwendungsbereich / Field of application
UP-Eins RM 4/0, 14-4,0mm²/GK 7540 S
UP-Die Set RM 4/0, 14-4,0mm²/GK 7540 S
Artikelnummer / Item number
1860-70100

Ausführung:

Workmanship:

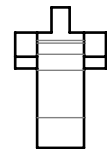
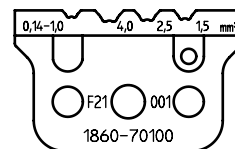
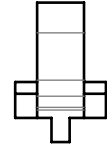
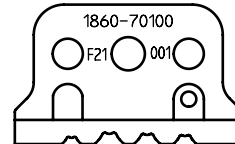
- Leichte Handhabung
Easy handling
- Einfache Kontaktpositionierung
Easy contact positioning
- Präzise gefertigte Profile
Precisely manufactured profiles
- Oberfläche brüniert
Burnished surface
- RoHS konform
RoHS compliant

Abmessungen:

Dimensions:

- Länge: ca. 37 mm
Length: approx. 37 mm
- Breite: ca. 30 mm
Width: approx. 30 mm
- Tiefe: ca. 12 mm
Depth: approx. 12 mm
- Gewicht: ca. 41,8 g
Weight: approx. 41,8 g

Crimpstempel, komplett
crimp punch, complete



Crimpamboss, komplett
crimp anvil, complete

Anwendungsbereich:

Application range:

Leiterquerschnitt Cross section range mm ²	Kontakt Typ: Contact Typ:
0,14-1,0	RM
1,5	
2,5	
4,0	