

Type: CS30-Crimpeinsatz-Set BNC 6-kant
CS30-Die Set BNC 6-kant

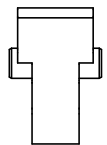
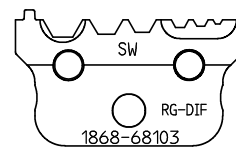
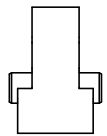
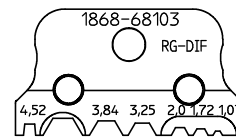
Code-No: 1868-68103

WDT-Type: RG-DIF

Crimpstempel, komplett
crimp punch, complete
1868-68002

Ausführung:
Workmanship:

- Leichte Handhabung
Easy handling
- Einfache Kontaktpositionierung
Easy contact positioning
- Präzise geschliffene Profile
Precisely ground profiles
- Oberfläche brüniert
Burnished surface
- Voll recylefähig:
RoHS (Richtlinie.2002/95/EG) konform
Fully recyclable:
RoHS (Directive.2002/95/EG) compliant



Crimpamboß, komplett
crimp anvil, complete
1868-68001

Patent Crimpeinsatz
Patent Die Set
DE 198 02 287
US 6,053,025

Anwendungsbereich:
Application range:

Profil	Leiterquerschnitt Cross section range SW	Kontakt-Typ: Contact-Type:
1	SW 4,52	BNC-Stecker (6-kant Pressung) BNC RF connectors (hex crimp)
2	SW 3,84	
3	SW 3,25	
4	SW 2,0	
5	SW 1,72	
6	SW 1,07	